

I4300 LMI / RCI Crane Indicator



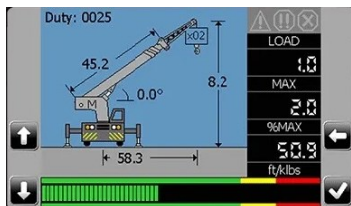
The i4300 is a fully capable LMI / RCI at the most cost effective price. The i4300 is designed for nearly all cranes and can use multiple type sensors. It can be configured for most telescopic and lattice boom cranes.

The display is full color high resolution with selectable units and languages (English, Spanish, French). It is IP67 so it can be used on open cabs and the 4.3" display is easy to read even in bright sun light. The i4300 will monitor capacity, load, boom angle, length radius and ATB on both hoist lines. It uses the latest CANbus technology for reliable and easy troubleshooting. Data can be saved or uploaded via a USB stick.

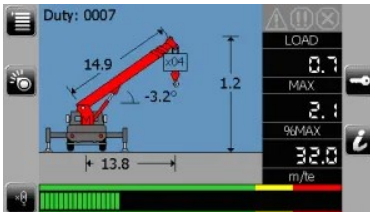
- Full Color Screen
- Can be read in full sun
- Selectable units and languages
- Pre-calibrated for most Grove & Shuttlelift carry deck cranes
- IP67 for open cabs
- CE & OSHA compliant
- CANBus for reliability
- Most Cost effective LMI / RCI

Flexible display for all types of cranes !

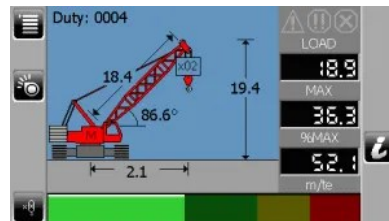
Carry deck



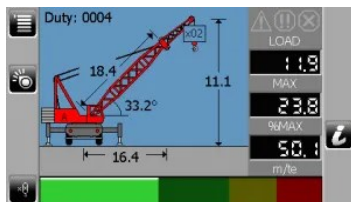
Boom Truck



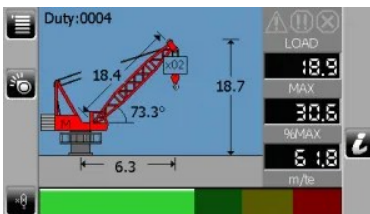
Crawler



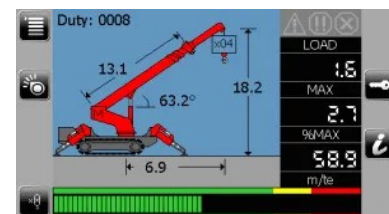
Truck Crane



Pedestal



Spider



Technical Data

- 4.3-inch display dimensions: 3,66"x7,80"x1,65" / 93x198x42 mm
- High resolution LCD screen readable in direct sunlight with accurate color images
- Night display mode
- Flexibility to add inputs and outputs on the CANbus network
- Intelligent computing for self-diagnostic detection of system malfunction
- Uploading of new information via a USB Stick - No special tools or laptop required with all calibration done from the display screen
- Display rating up to IP67 and suitable for an indoor or outdoor environment and a temperature range of -20° C to 70° C (-4°F to 158°F).
- Most Grove and Shuttlelift carry deck kits will come pre-calibrated
- Supply voltage 11 to 36 vdc
- Audible and visual alarms
- Output connection for lock-out circuit for overload and ATB
- Self-diagnostic mode with fault log
- CPU and Display in one unit

Load moment indicators (LMI) and rated capacity indicators (RCI) are the most essential operator aid for protecting your crane from an overload accident. Both systems monitor the essential information the crane operator needs to know. The LMI or RCI show the operator the weight of the load being lifted, the capacity at that radius, the boom angle, length, radius and anti-two block (ATB) warning. There are several different sensors and designs used to monitor this information.

LMI systems measure the force on the boom. Usually this is on a telescopic boom crane and done with pressure sensors on the rod and bore side of the boom lift cylinder. RCI systems directly measure the tension of the hoist line. Usually this is done with a load link, pin or dynamometer.

Protect your people and equipment.

Comply with OSHA regulations.

Reliable, Cost Effective LMI / RCI.

I4300 LMI for Carry Deck Cranes



The i4300 is a fully capable LMI at a cost effective price. It is perfect for telescopic boom cranes. Grove / Shuttlelift use it as their OEM system on their carry deck cranes and it is easy to retrofit on older models. Most can be sent pre-calibrated.

The display is full color with selectable units and languages (English, Spanish, French). It is IP67 so it can be used on open cabs and the 4.3" display is easy to read in bright sun light. The i4300 will monitor capacity, load, boom angle, length radius and ATB on both hoist lines. It uses the latest CANbus technology for reliability and easy troubleshooting. Data can be saved or uploaded via a USB connection.

Upgrade your carry deck crane today with the most Affordable and Best LMI!

- Full Color Screen
- Can be read in full sun
- Selectable units and languages
- Pre-calibrated for most Grove & Shuttlelift carry deck cranes
- IP67 for open cabs
- CE & OSHA compliant
- CANBus for reliability
- Most Cost effective LMI

