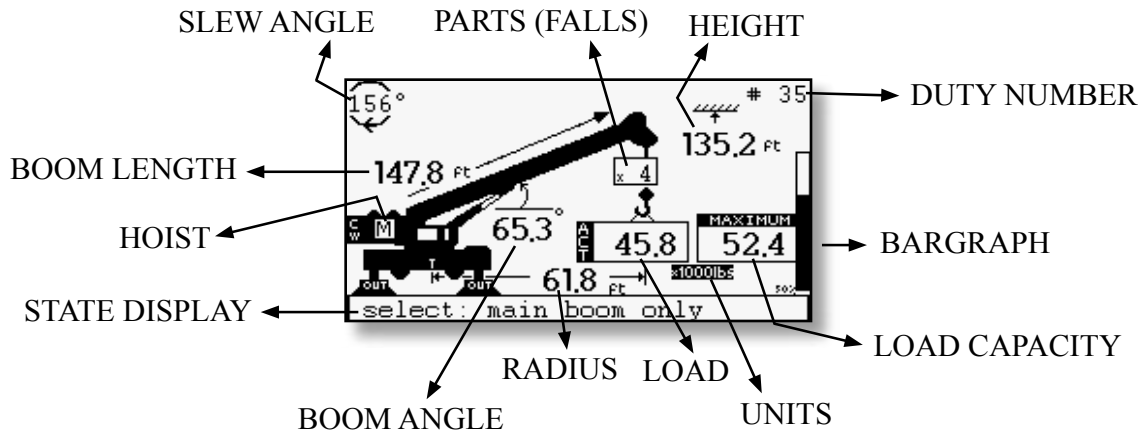


i3000 TELESCOPIC CRANE INTERFACE DESCRIPTION



ALARMS

ATB active	Rope limitation	Preset limit(s) reached
Approach warning of overload	Overload condition	Cut-off condition

DISPLAY BUTTONS PRESENTATION

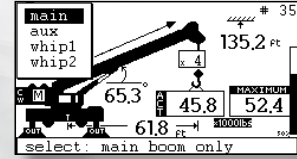
Shows system's modes.	Shows the problem source when a fault is detected.
Shows hoists for selection. Also used to scroll up in menus or increase modifiable values.	Shows the menu for the selection of duty by number or by crane configuration.
Shows parts of line (falls). Also used to scroll down in menus or decrease modifiable values.	Shows all the information regarding the actual crane configuration.
Escape from a menu list. Also used to cancel modification of a value.	Bypass the motion cut (lockout). Enter the rigging mode.
Select button. Used to select a highlighted item in a menu.	Switch the load display between the actual load and the tare load.
Press button #1 and button #4 <u>simultaneously</u> to reset the system. This could be useful if the system stalls or becomes unstable due to DC power supply regulation.	

i3000 Quick Reference

i3000 BASIC OPERATION

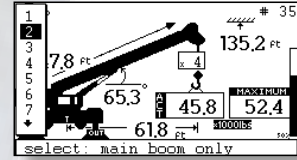
HOIST SELECTION:

- 1- Push button HOIST(#2) to display hoist selection.
- 2- Scroll up or down with buttons #2 and #3 to highlight the desired selection.
- 3- Push button #4 to confirm your choice.



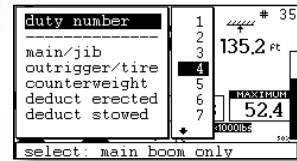
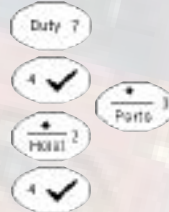
PARTS OF LINE (FALLS) SELECTION:

- 1- Push button #3 to display the parts of line (falls) selection.
- 2- Scroll up or down with buttons #2 and #3 to highlight the desired selection.
- 3- Push button #4 to confirm your choice.



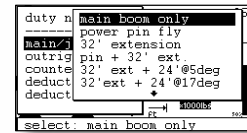
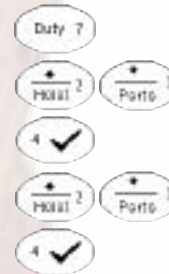
CHANGING CONFIGURATION BY THE DUTY NUMBER:

- 1- Push button DUTY (#7) to display the duty menu.
- 2- The duty number should be already highlighted.
- 3- Push button #4 to enter the duty number menu.
- 4- Scroll up or down to highlight the desired duty number.
- 5- Push button #4 to confirm your choice.



CHANGING CONFIGURATION BY THE PARAMETER SELECTION:

- 1- Push button DUTY (#7) to display the duty menu.
- 2- Scroll up or down to highlight the parameter you wish to change.
- 3- Push button #4 to display available choices for this parameter.
- 4- Scroll up or down to highlight the desired configuration.
- 5- Push button #4 to confirm your selection.
- 6- Repeat steps 1 to 5 for every parameter you need to change.



BYPAS THE LOCK-OUT CONDITION:

- 1- To bypass the lock-out condition push the button #9.



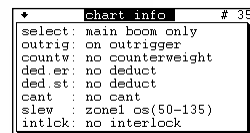
RIGGING MODE:

- 1- To enter rigging mode, the capacity of the crane must be at the floor value listed in the first column of the crane's chart or under the boom rigging angle set in the i3000 calibration mode.
- 2- Push button #9.
- 3- As soon as the floor value is exited the rigging mode is cancelled.



INFORMATION ON THE CRANE CONFIGURATION:

To display the actual configuration of the crane, push button INFO (#8). Push it a second time to display the system version.



FAIL INFORMATION:

When the state display show «X fails detected !! press ?» push button ? (#6) to show which fail is detected.



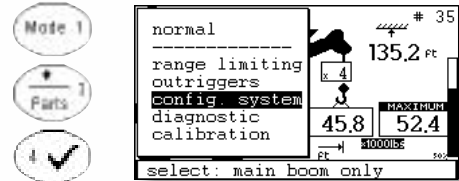
i3000 Quick Reference

SYSTEM CONFIGURATION

CONFIGURATION SETTINGS OF THE SYSTEM (CONFIG. SYSTEM):

Numerous parameters can be configured by the operator. These parameters are grouped in the menu config system and they include : language selection, units selection, reverse video, fails enable or disable. To modify one or more of these options you must access the config system menu as follows:

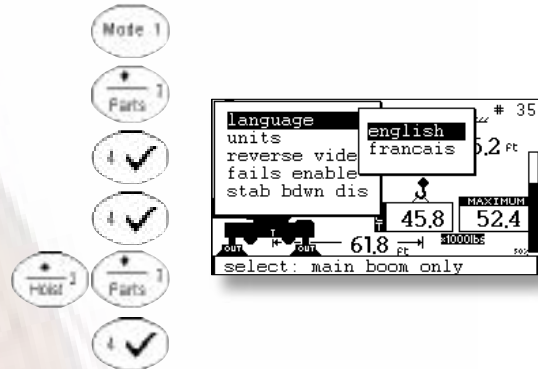
- 1- Push the MODE button (#1).
- 2- Scroll down with the down button (#3) to highlight the «config.system» line.
- 3- Push the select button (#4) to confirm your choice and enter the menu.



LANGUAGE SELECTION:

All the W3000's text can be displayed in two languages: English (default) and another as specified in the order. To change the language proceed as follows:

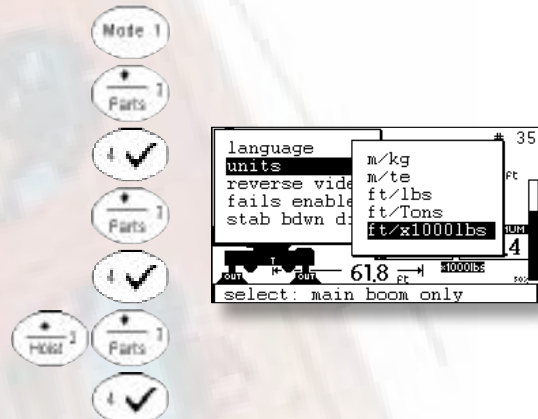
- 1- Push the MODE button (#1).
- 2- Scroll down with the down button (#3) to highlight the «config.system» line.
- 3- Push the select button (#4) to confirm your choice.
- 4- The «language» line should be highlighted. If not, scroll up or down to highlight it. Push select button (#4) to enter the language menu.
- 5- Scroll up or down to highlight the desired language.
- 6- Push the select button (#4) to confirm your choice.



UNITS SELECTION:

It is possible to choose between 5 unit combinations. Each measure (length, load and pressure) will be displayed on the main display. Proceed as follows to change these units:

- 1- Push the MODE button (#1).
- 2- Scroll down with the down button (#3) to highlight the «config.system» line.
- 3- Push the select button (#4) to confirm your choice.
- 4- Scroll down to highlight the «units» line.
- 5- Push the select button (#4) to enter the units menu.
- 6- Scroll up or down (button #2 or #3) to highlight the desired unit combination.
- 7- Push the select button (#4) to confirm your choice.

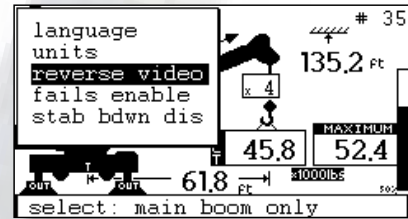


SYSTEM CONFIGURATION AND DIAGNOSTIC MENU

REVERSE VIDEO:

You can invert the colors (black <--> white) to aid the operator's vision of the display in various lighting conditions.

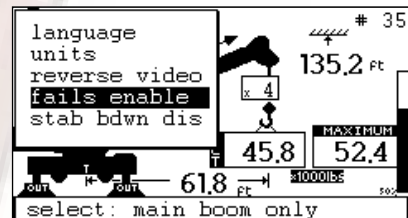
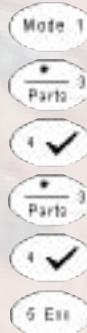
- 1- Push the MODE button (#1).
- 2- Scroll down with the down button (#3) to highlight the «config.system» line.
- 3- Push the select button (#4) to confirm your choice.
- 4- Scroll down to highlight the «reverse video» line.
- 5- Push the select button (#4) to invert the colors.
- 6- Push the ESC button (#5) to return to the normal mode.



FAILS ENABLED OR DISABLED:

In the main display, when there is a fail, the state display will show «1 fails detected !! press ?» as long as the fail exists. If you don't want the state display to warn you when a fail is detected, just disable it as follows:

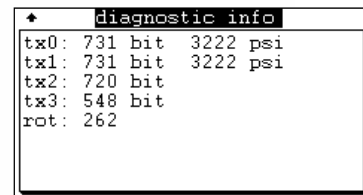
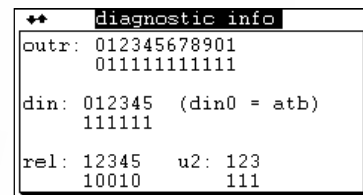
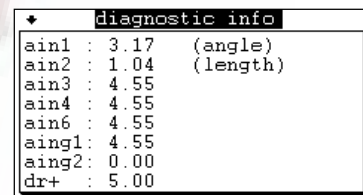
- 1- Push the MODE button (#1).
 - 2- Scroll down with the down button (#3) to highlight the «config.system» line.
 - 3- Push the select button (#4) to confirm your choice.
 - 4- Scroll down to highlight the «fails enable» line.
 - 5- Push the select button (#4) to switch to «fails disable».
 - 6- Push the ESC button (#5) to return to the normal mode.
- To enable the fails again, repeat steps 1-6.



DIAGNOSTIC MENU:

The diagnostic menu can be very helpful to verify the sensor's signals. To view the diagnostic menu proceed as follows:

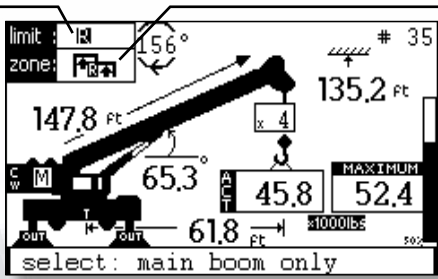
- 1- Push the MODE button (#1).
- 2- Scroll down with the down button (#3) to highlight the «diagnostic» line.
- 3- Push the select button (#4) to enter into the diagnostic info menu.
- 4- Scroll up and down to visualize all pages.
- 5- Push the ESC button (#5) to go back to the normal mode.



i3000 RANGE LIMITING DEVICE (OPTIONAL)

Shows which limit is reached:

- R RADIUS
- H HEIGHT
- W WALL



Shows which zone is programmed:

- limit high (roof)
- variable limit height
- variable limit radius
- free zone (two walls)

ALARMS:

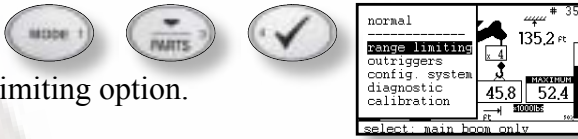
- APPROACH WARNING OF THE LIMIT
- LIMIT REACHED
- CUT-OFF CONDITION

LIMIT PROGRAMMING:

There are 4 types of limits that can be programmed: **LIMIT HIGH**, **FREE ZONE**, **VARIABLE LIMIT HEIGHT** and **VARIABLE LIMIT RADIUS**. Because only one limit may be programmed at a time, you will need to delete any previously programmed limit. When a limit is programmed, the associated icon will be displayed in the area «zone». When you program a zone, just follow the instructions at the bottom of the screen.

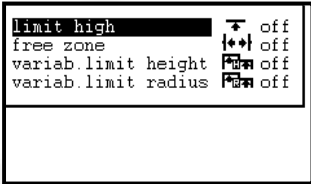
▶ ACCESSING THE RANGE LIMITING MODE:

- 1- Push the Mode button (#1) to display the mode menu.
- 2- Scroll down with button #3 once to highlight the range limiting option.
- 3- Push button #4 to enter the range limiting menu.



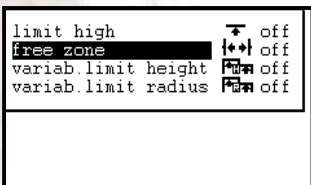
1) LIMIT HIGH:

- 1- Access the range limiting mode.
- 2- Use the up (#2) and down (#3) buttons to highlight «limit high» and push button #4 to confirm your choice.
- 3- Boom up to the desired boom tip height limit.
- 4- Push button #4 to confirm the maximum boom tip height position. As you release button #4, an 8 second countdown will allow you to boom down before your programmed height limit becomes active.
- 5- The display will automatically return to the normal mode.



2) FREE ZONE:

- 1- Access the range limiting mode.
- 2- Use the up (#2) and down (#3) buttons to highlight «free zone» and push button #4 to confirm your choice.
- 3- Rotate the crane to the first limit position (first wall).
- 4- Push button #4 to confirm that this will be the position of the first wall.
- 5- Rotate the crane to the second limit position (second wall).
- 6- Push button #4 to confirm. This will be the position of the second wall. As you release button #4, an 8 second countdown will allow you to rotate the crane between the two walls before your programmed free zone limit becomes active.
- 7- The display will automatically return to the normal mode.

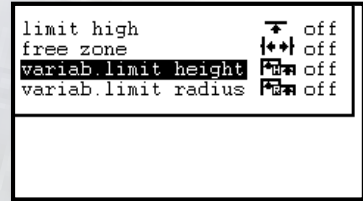


i3000 Quick Reference

i3000 RANGE LIMITING DEVICE (OPTIONAL)

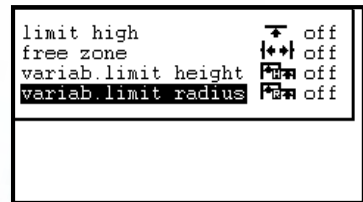
3) VARIABLE LIMIT HEIGHT:

- 1- Access the range limiting mode.
- 2- Use the up and down buttons to highlight «variab.limit height».
- 3- Push button #4 to confirm your choice.
- 4- Rotate the crane to the first limit position (first wall).
- 5- Push button #4 to confirm that this will be the position of the first wall.
- 6- Rotate the crane toward the second limit position (second wall) with the boom tip always at the maximum height permitted by the surrounding environment.
- 7- Push button #4 to confirm the position of the second wall. As you release button #4, an 8 second countdown will allow you to return between the two walls and boom down below the height limit before your programmed variable height limit becomes active.
- 8- The display will automatically return to the normal mode.



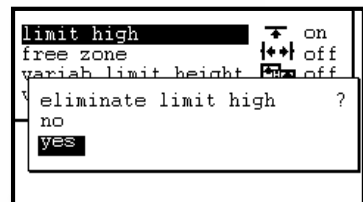
4) VARIABLE LIMIT RADIUS:

- 1- Access the range limiting mode.
- 2- Use the up and down buttons to highlight «variab.limit radius».
- 3- Push button #4 to confirm your choice.
- 4- Rotate the crane to the first limit position (first wall).
- 5- Push button #4 to confirm that this will be the position of the first wall.
- 6- Rotate the crane toward the second limit position (second wall) with the boom tip always at the maximum radius permitted by the surrounding environment.
- 7- Push button #4 to confirm the position of the second wall. As you release button #4, an 8 second countdown will allow you to return between the two walls and boom up within the allowed radius limit before your programmed variable radius limit becomes active.
- 8- The display will automatically return to the normal mode.



▶ DELETING A PROGRAMMED LIMIT:

- 1- Access the range limiting mode.
- 2- Push button #4 to display the delete limit menu.
- 3- Scroll down to highlight «yes».
- 4- Push button #4 to confirm that you want to delete the limit.
- 5- Push the ESC button (#5) to return to the normal mode.



i3000 Quick Reference