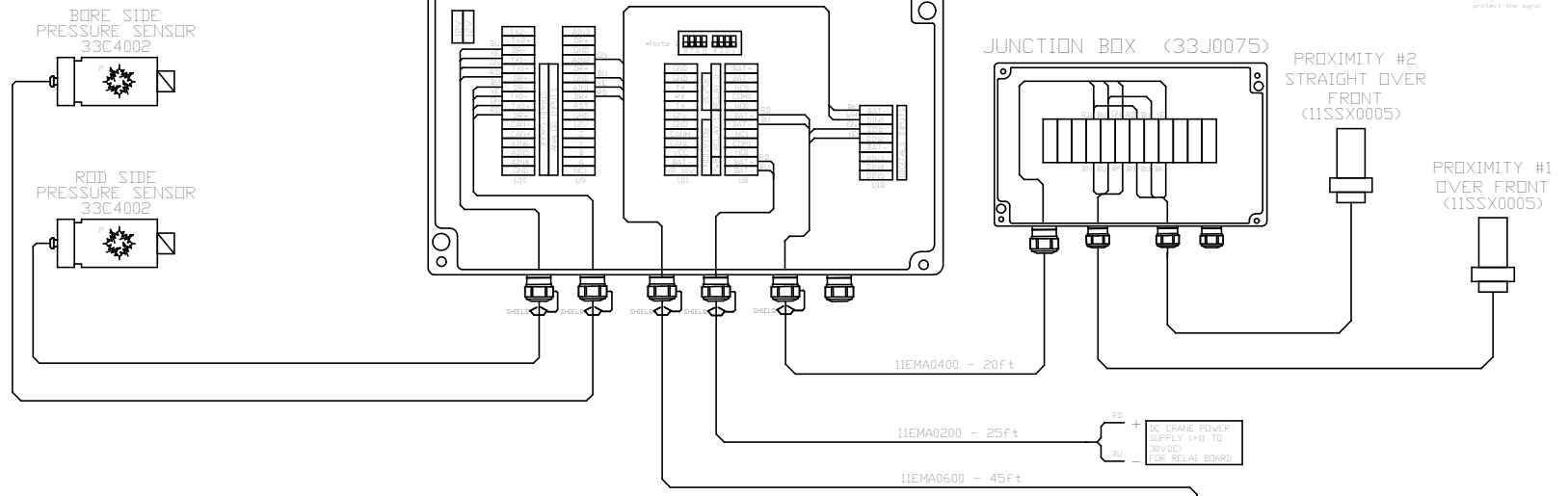


# FOR EXTERNAL USE

## DISPLAY W3100 (33D3101)



SHIELD: When connect the photo (crane) wire of ground conduct with the ground to prevent the signal.

DC CRANE POWER SUPPLY (+12 TO 24VDC) FOR RELAY BOARD

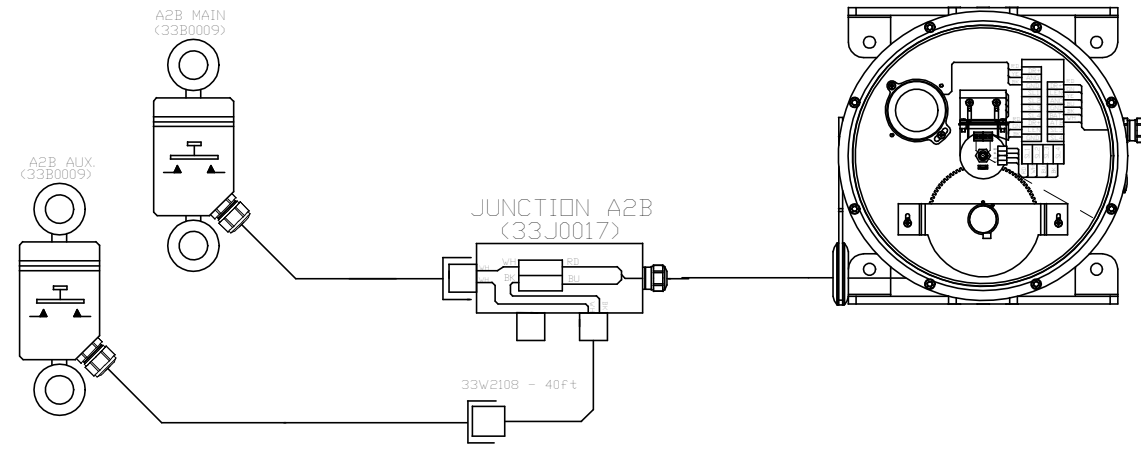
### LEGEND

#### DIP SWITCH DESCRIPTION

Note 1  
 8 <--- Dn TX0+ = 243 ohms  
 7 <--- Dn TX0- = Gnd  
 6 <--- Dn TX1+ = 243 ohms  
 5 <--- Dn TX1- = Gnd  
 4 <--- Dn TX2+ = 243 ohms  
 3 <--- Dn TX2- = Gnd  
 2 Not Connected  
 1 Not Connected

\*Note 2  
 4 Calibration <--- OFF DN <---  
 3 Not Connected  
 2 Not Connected  
 1 Shaft <--- Up Down <---  
 <--- <--- <---

VCC: +5V Isolated  
 12V: Isolated  
 DR+ :+5V Isolated  
 DR- :+5V Isolated  
 VR :+10V Not Isolated  
 BAT+ :Not Isolated  
 BAT- :Not Isolated



THE INFORMATION CONTAINED IN THIS DRAWING IS THE PROPERTY OF RAYCO-WYLIE SYSTEMS. IT MAY NOT BE REPRODUCED IN ANY FORM, AND THE CONTENTS MAY NOT BE DISCLOSED TO A THIRD PARTY WITHOUT THE COMPANY'S CONSENT. LES INFORMATIONS CONTENUS SUR CE DESSIN SONT LA PROPRIETE DE RAYCO-WYLIE SYSTEMS. IL N'EST PAS PERMIS DE REPRODUIRE SOUS AUCUNE FORME CE DOCUMENT OU LE REVELER A AUTRUI SANS LE CONSENTEMENT DE LA COMPAGNIE.		ISS ECO DATE 2012-01-13	LDT APP'D
 2440, AVE. DALTON SAINTE-FOY (QUEBEC) CANADA G1P 3X1 TEL: (418) 266-6600 FAX: (418) 266-6610 WWW.RAYCOTECH.COM	UNITS / UNITES PROJECTION	COLOURS CODE / CODE DE COULEURS BU = BLUE / BLEU BR = BRED / BRUN GN = GREEN / VERT OR = YELLOW / JAUNE WH = WHITE / BLANC BK = BLACK / NOIR BRN = BROWN / BRUN VL = VIOLET / VIOLET RN = PINK / ROSE	PROJECT NUMBER / NO. PROJET: 66L3100TM5 - CRANE WARNING SYSTEMS SUBJECT / SUJET: KOBELCO RK250 66L3100TM5 - W3100 IN TOTAL MOMENT
	SCALE / ECHELLE: NTS	PROJECT NUMBER / NO. PROJET: 66L3100TM5 - CRANE WARNING SYSTEMS SUBJECT / SUJET: KOBELCO RK250 66L3100TM5 - W3100 IN TOTAL MOMENT	DRG No / DESIGN No: SCH37899
		SHEET / PAGE: 4 / 1	C:\Documents and Settings\yang\Bureau\SCH37899.dwg