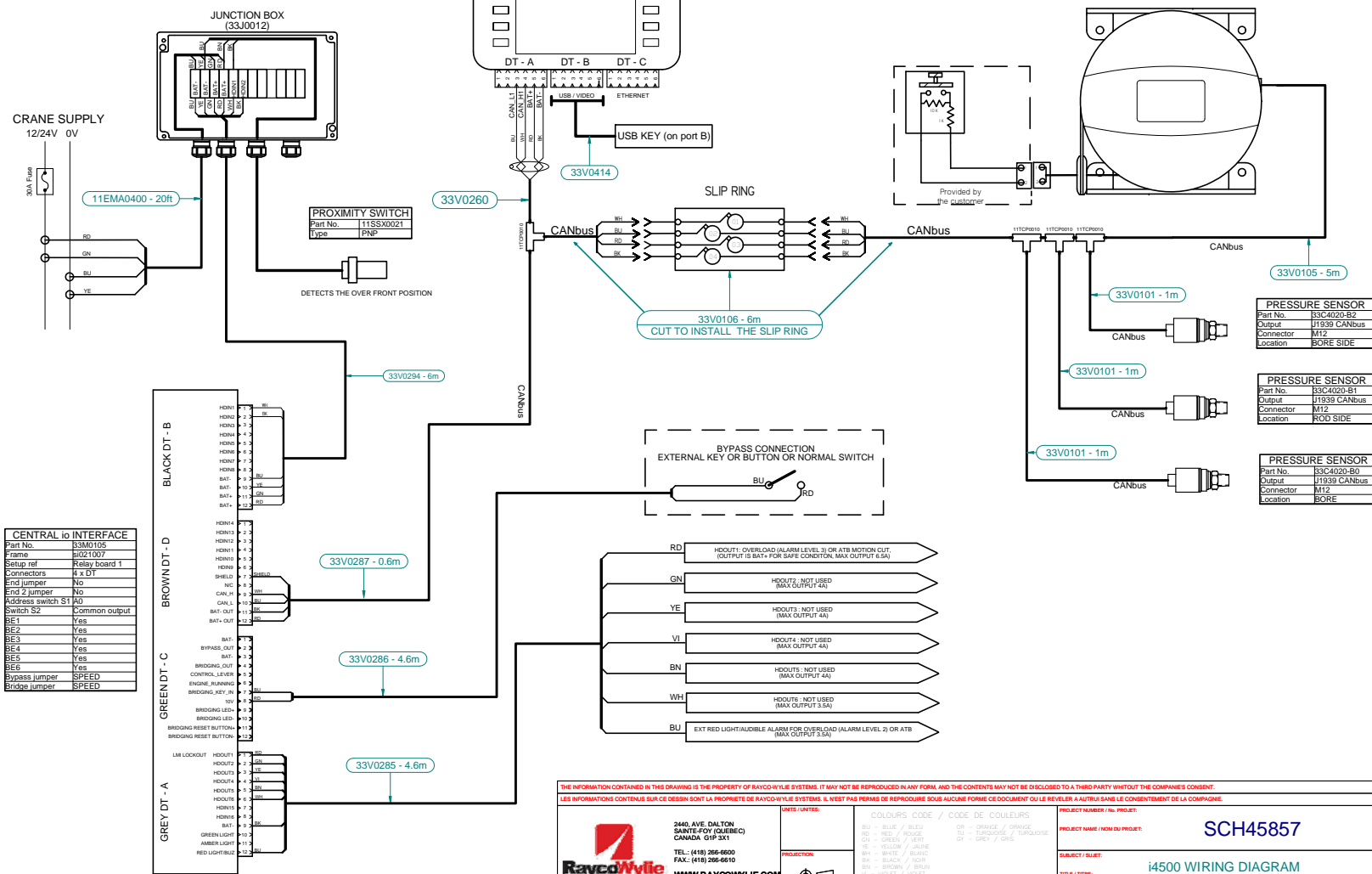


FOR EXTERNAL USE

BOOM EXTENSION REEL	
Part No.	B3R6123-1
Frame	SK021005
Setup ref 1	Angle 1
Setup ref 2	Length 1 (10T)
Connector	MI2
End jumper	YES
IPT (ATB D/G)	OFF
IP2 (ATB NAM)	YES
Playout cable con. to:	Boom head
Address switch S1	OFF
Address switch S2	OFF
Address switch S3	OFF
ATB Switch S4	ON (Dia nam)
Slip ring connector to:	U4

i4500 DISPLAY	
Part No.	B3D4500
Frame	SC122006
Load chart	CHR45857
Text	SC142000
Connector	DT
End jumper	Yes



CENTRAL io INTERFACE	
Part No.	B3M1015
Frame	BU021007
Setup ref	Relay board 1
Connectors	I x DT
End jumper	No
End 2 jumper	No
Address switch S1 A0	Common output
Switch S2	
BE1	Yes
BE2	Yes
BE3	Yes
BE4	Yes
BE5	Yes
BE6	Yes
Bypass jumper	SPEED
Bridge jumper	SPEED

TABLE OF ENABLED INPUTS	
Angle 1	ON
Angle 2	OFF
Angle 3	OFF
Angle 4	OFF
Angle 5	OFF
Cart X 33A0049	OFF
Cart Y 33A0049	OFF
Length 1	ON
Length 2	OFF
Length 3	OFF
Length 4	OFF
Length 5	OFF
Load 1	ON
Load 2	ON
Load 3	ON
Load 4	OFF
Relay board 1	ON
Relay board 2	OFF
Relay board 3	OFF
Relay board 4	OFF
Rotation (relays)	OFF
Generic 1 Input 1	OFF
Generic 1 Input 2	OFF
Generic 1 Rotation (absolute)	OFF
Generic 1 Analogue output	OFF
Generic 2 Input 1	OFF
Generic 2 Input 2	OFF
Generic 2 Rotation (absolute)	OFF
Generic 2 Analogue output	OFF
Generic 3 Input 1	OFF
Generic 3 Input 2	OFF
Generic 3 Rotation (absolute)	OFF
Generic 3 Analogue output	OFF
Generic 4 Input 1	OFF
Generic 4 Input 2	OFF
Generic 4 Rotation (absolute)	OFF
Generic 4 Analogue output	OFF
IPo1 AIN1 or ATB1 Namur	OFF
IPo1 AIN2 or ATB2 Namur	OFF
IPo1 AIN3 or Windspeed	OFF
IPo1 AIN4	OFF
IPo1 HDIN/HDOUT	OFF
IPo2 AIN1 or ATB1 Namur	OFF
IPo2 AIN2 or ATB2 Namur	OFF
IPo2 AIN3 or Windspeed	OFF
IPo2 AIN4	OFF
IPo2 HDIN/HDOUT	OFF
IPo3 AIN1 or ATB1 Namur	OFF
IPo3 AIN2 or ATB2 Namur	OFF
IPo3 AIN3 or Windspeed	OFF
IPo3 AIN4	OFF
IPo3 HDIN/HDOUT	OFF

<p>THE INFORMATION CONTAINED IN THIS DRAWING IS THE PROPERTY OF RAYCO/WYLE SYSTEMS. IT MAY NOT BE REPRODUCED IN ANY FORM, AND THE CONTENTS MAY NOT BE DISCLOSED TO A THIRD PARTY WITHOUT THE COMPANY'S CONSENT.</p> <p>LES INFORMATIONS CONTENUS SUR CE DESSIN SONT LA PROPRIETE DE RAYCO/WYLE SYSTEMS. IL N'EST PAS PERMIS DE REPRODUIRE SOUS AUCUNE FORME CE DOCUMENT OU LE REVELER A AUTRUI DANS LE CONSENTEMENT DE LA COMPAGNE.</p>		<p>3/21/2016</p> <p>Iss ECO DATE DRW APPD</p>
<p>UNITS / UNITES</p> <p>PROJECTION</p>	<p>COULEURS CODE / CODE DE COULEURS</p> <p>ORANGE / ORANGE TURQUOISE / TURQUOISE JAUNE / JAUNE ROUGE / ROUGE VERT / VERT BLEU / BLEU NOIR / NOIR BLANC / BLANC GRIS / GRIS ROSE / ROSE</p>	<p>PROJECT NUMBER / NO. PROJET: SCH45857</p> <p>PROJECT NAME / NOM DU PROJET: i4500 WIRING DIAGRAM i4500 TELESCOPIC, TOTAL MOMENT</p> <p>ISSUE / REV. / SHEET / PAGE: SCH45857 01 1/1</p>

2440, AVE. DALTON
SAINTS-FOY (QUEBEC)
CANADA G1P 3X1
TEL: (418) 266-6600
FAX: (418) 266-6610
WWW.RAYCO/WYLE.COM