

Procedure to upload a new frame on the i4500

1. Preparation before starting



Please, get the USB cable (part number 33V0414) and connect it to the connector B, on the back of your display (as indicated in the picture above).

Now, you have to prepare your USB stick. It must be in FAT32 format.

- If your USB stick is already in FAT32, you can download the files you want to upgrade in your system: But, they need to be in the main directory, not in a sub directory because the i4500 won't be able to recognize it.
- If the USB stick is not in FAT32, change it for another one with the good format.

2. Entering in the bootloader mode

To enter "boot loader mode" to update the software information of the system

- Power or reset the system by pressing both the top left and top right buttons on the display,
- At start up, as soon as "Starting System" (*) appears below the Rayco-Wylie logo, press the bottom right button. It will say, "Starting Bootloader" (**),

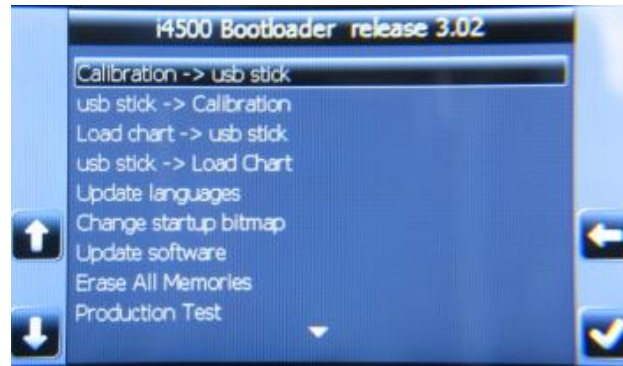


(*)

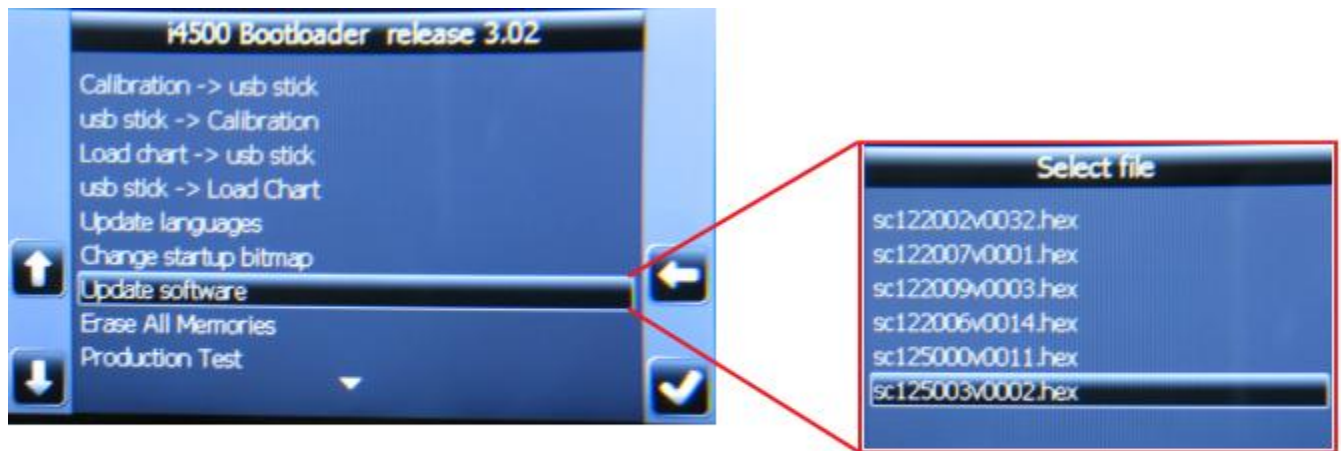


(**)

You should see the following picture when entered in the bootloader menu.



2.1 Change the software




Select the menu "Update Software" and in the listing that appears choose the software you want to program

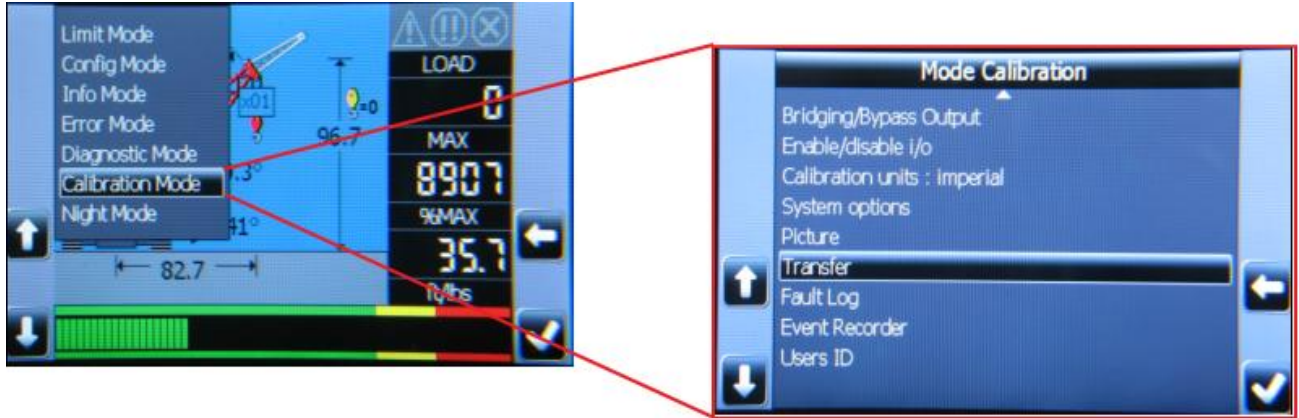
2.2 Change the language



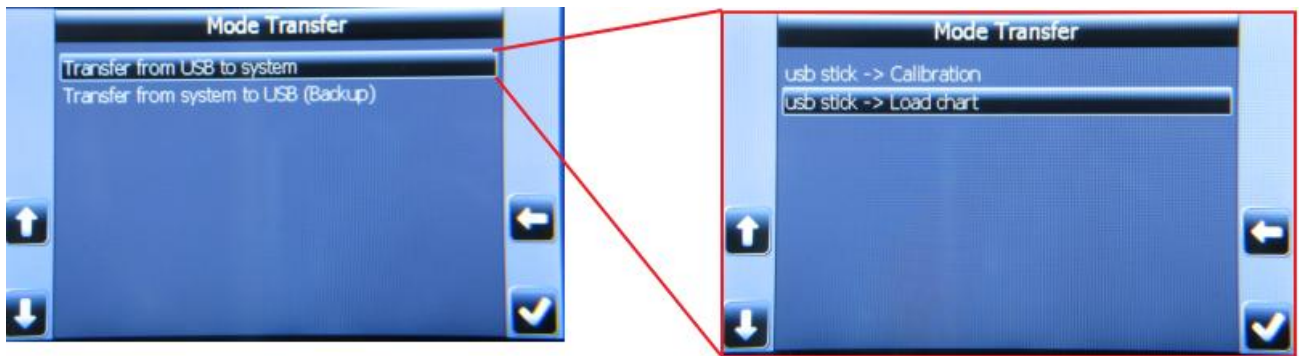
Select the menu "Update languages" and in the listing that appears choose the file you want to program.

To leave the bootloader and be back in the operating mode, press the key  .

3. Change the Calibration and Load chart data



After you select the transfer, you'll have to chose "Transfer from USB to system".



At this step, you can select the data you want to change (calibration or Load chart). The system will show you a list of all available load charts (or calibrations). Just select the one you need.